

RP350

Modeling Guitar Processor

The RP Legacy Continues. We invented guitar multi-effects. We've satisfied more than a million RP owners. Now we've RE-redefined the product category with the most powerful guitar processors ever — a totally new generation of modeling technology with awesome effects and amp models so rich they should carry a cholesterol warning.



RP WITH **AudioDNA²**

RP350 AudioDNA² DSP super-chip ■ Intuitive operation – pick one of 30 settings from the Tone Library; add your choice from 30 Effect Library combinations ■ 118 total models ■ 73 Effect models including classic distortion stompboxes ■ Up to 5 seconds delay ■ 27 Amp/Preamp/ Acoustic models with A/B switching ■ 18 Cabinet Models ■ 70 Factory / 70 User presets ■ 2 x 2 streaming USB I/O ■ Metal Expression pedal ■ 6-character and 2-digit LCD displays ■ XLR Stereo Outputs • ¼" Stereo Outputs • ½" Stereo Headphone Output • ⅛" Aux Input • ¼" Instrument Input ■ 24 bit – 44.1kHz A/D/A sampling rate ■ High quality drum machine with 60 patterns ■ Power supply included



USB connectivity for recording, preset editing/archiving/downloading and more.

AudioDNA². The power inside the pedal.

400% more horsepower. No wonder the RP350 sounds so good. You're looking at the world's most advanced audio processor, the "engine" that gives our new RP models so much more raw impact and subtle detail.

Other manufacturers use general-purpose, off-the-shelf chips. But creating the best guitar tone requires a 100% specialized, optimized processor.

Being total audio processing fanatics, our "Chip Wizard" engineers



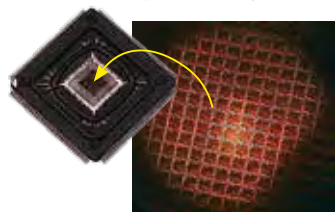
set out to create a super-processor specifically designed to power a whole new generation of effects and models.

The design team worked for over two years, literally re-defining audio signal processing at the chip level. Then our "Tone Guru" engineers — fresh from Production Modeling™ triumphs like the Jimi Hendrix Experience™ Artist Series pedal — set to work taking advantage of all this new raw processing power.

When you hear what AudioDNA² does for the tone of the RP350 you'll agree it was all worth it.

The RP350 is ready to talk to your PC or Mac® computer: it has a built-in 24-bit 2-in/2-out USB interface. Lay down tracks with your favorite multitrack DAW software. Play back a mix or MP3 cut directly through your RP350 and jam along

with it. Download a free copy of X-Edit™ Editor/Librarian from www.digitech.com and customize presets, upload and download new tones, including those from magazine web sites and our own thriving online player community.



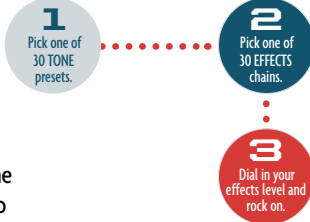
Digitech
The Power to Create

RP350

Up to 118 total models...and a unique new way to blend them together fast.

Accessing superbly detailed new models has never been easier!

Three steps to dial in the perfect sound with our new **Tone** and **Effects Library** knobs. You may never go any deeper into the infinitely-tweakable RP interface. New RP **Tone** and **Effects Libraries** let you access pre-designed combinations of models as fast as you can turn the knob. From mellow and bluesy to scorch-the-face-of-the-earth-raw, you're gonna find combinations that fit your playing style.



Stompbox Distortion Models

- based on Ibanez® TS-9 Tube Screamer™*
- based on Ibanez® TS-808 Tube Screamer™*
- based on Voodoo Labs Sparkle Drive*
- based on Guyatone Overdrive OD-2*
- DOD® 250 Overdrive/Preamp
- based on ProCo Rat™*
- based on MXR®* Distortion +
- based on Boss®* DS-1 Distortion
- DigiTech® Grunge®
- based on Boss® MT-2 Metal Zone®*
- DigiTech® Death Metal™
- DOD® Gonkulator™ Ring Mod
- based on Roger Mayer Octavia*
- based on Demeter™ Fuzzulator™*
- DOD® Classic Fuzz™
- based on Arbiter Fuzz Face*
- based on EH® Big Muff® π*

Volume / Wah Models

- DigiTech® Full Range
- based on Dunlop® Cry Baby®* Wah
- based on Vox® Clyde McCoy Wah™*

Compressor / Limiter Models

- DigiTech® Compressor
- based on Boss®* CS-2 Compressor/Sustainer
- based on MXR® DynaComp™*

Chorus Models

- based on Boss®* CE-2 Chorus
- based on TC Electronic®* Chorus
- DigiTech® Dual Chorus
- DigiTech® Multi Chorus®

Flanger Models

- DigiTech® Flanger
- DigiTech® Triggered Flanger
- based on MXR®* Flanger
- based on EH® Electric Mistress™*

Phaser Models

- based on DigiTech® Phaser
- based on DigiTech® Triggered Phaser
- based on MXR®* Phase 100
- based on EH® Small Stone™*

Pitch Models

- DigiTech Whammy®
- DigiTech® Pitch Shift
- DigiTech® Detune
- DigiTech® IPS
- based on Boss® OC-2 Octaver™*

Vibrato / Rotary Models

- DigiTech® Vibrato
- DigiTech® Rotary
- DigiTech® Vibro/Pan
- based on Unicord Univibe™*

Tremolo Models

- DigiTech® Tremolo
- DigiTech® Panner
- based on Fender® Opto Tremolo™*
- based on Vox® Bias Tremolo*

Envelope / Special Models

- DigiTech® Envelope Filter
- DigiTech® Auto Ya™
- DigiTech® YaYa™
- DigiTech® Synth Talk™
- DigiTech® Step Filter
- DOD® FX25

Equalization

- 4 band EQ

Delay Models

- DigiTech® Analog Delay
- Boss®* DM-2 Analog Delay
- DigiTech® Digital Delay
- DigiTech® Modulated Delay
- DigiTech® Pong Delay
- DigiTech® Tape Delay
- based on Maestro™* EP-2
- Echoplex™ Tape Echo*

Reverb Models

- based on Fender® Twin Reverb™*
- Lexicon® Ambience
- Lexicon® Studio
- Lexicon® Room
- Lexicon® Hall
- based on EMT* 240 Plate

Noise Gate / Auto Swell

- DigiTech® Noise Gate
- DigiTech® Auto Swell

Amp Models

- based on '57 Fender® Tweed Deluxe®*
- based on '57 Fender® Tweed Champ*
- based on '59 Fender® Tweed Bassman®*
- based on '65 Fender® Blackface Twin Reverb™*
- based on '65 Fender® Blackface Deluxe Reverb®*
- based on '65 Marshall®*JTM-45
- based on '68 Marshall® 100 Watt Super Lead™* (plexi)
- based on '68 Marshall®* Jump Panel
- based on '77 Marshall® Master Volume™*
- based on '83 Marshall®*JCM800
- based on '93 Marshall®* JCM900
- based on '62 Vox®*AC15
- based on '63 Vox®* AC30 Top Boost
- based on '69 Hiwatt™*Custom 100 DR103
- based on '81 Mesa/Boogie®* Mark II C
- based on '01 Mesa/Boogie® Dual Rectifier™*
- based on '96 Matchless® HC30
- based on '88 Soldano®* SLO-100

- DigiTech® Solo
- DigiTech® Metal
- DigiTech® Bright Clean
- DigiTech® Clean Tube
- DigiTech® High Gain

Preamp Models

- DigiTech® 2101 Clean Tube
- DigiTech® 2101 Clean Saturated Tube

Acoustic Models

- based on Dreadnaught Acoustic
- based on Jumbo Acoustic

Cabinet Models

- based on 1x8 - '57 Fender®* Tweed Champ™
- based on 1x12 - '57 Fender® Tweed Deluxe Reverb®*
- based on 1x12 - '65 Fender® Blackface Deluxe Reverb™*
- based on 2X12 - '57 Fender® Blonde Bassman®*
- based on 2x12 - '65 Fender® Blackface Twin Reverb™*
- based on 2x12 - '63 Vox®* AC30 Top Boost w/Jensen® Blue Backs
- based on 4X10 - '59 Fender® Tweed Bassman®*
- based on 4x12 - Marshall® 1969 Straight w/Celestion®* G12-T70
- based on 4x12 - Marshall® 1969 Slant w/Celestion® 25WGreenbacks™*
- based on 4x12 - Hiwatt® Custom w/Fane®* Speakers
- 4x12 - Johnson® Straight w/Celestion Vintage 30's
- based on 4x12 - '96 VHT® Slant w/Celestion®* Vintage 30's

Pickup Models

- Single Coil > Humbucker
- Humbucker > Single Coil



©2006, All Rights Reserved, Harman International Industries Inc. • All specifications subject to change. DigiTech, X-Edit, Production Modeling, Grunge, Death Metal, DOD, Gonkulator, DigiTech Whammy, Auto Ya, YaYa, Synth Talk, Lexicon and AudioDNA are trademarks of Harman International Industries Inc.

*Other product names modeled in this product are trademarks of their respective companies that do not endorse and are not associated or affiliated with DigiTech or Harman International Industries, Inc. Ibanez Tube Screamer, Voodoo Labs Sparkle Drive, Guyatone Overdrive, ProCo Rat, MXR, Boss Metal Zone, Roger Mayer Octavia, Demeter Fuzzulator, Arbiter Fuzz Face, EH Big Muff Pi, Dunlop Cry Baby, Vox, Clyde McCoy Wah, MXR DynaComp, TC Electronic, EH Electric Mistress, EH Small Stone, Boss Octaver, Unicord Univibe, Fender Opto Tremolo, Vox Bias Tremolo, Maestro Echoplex, Fender Twin Reverb, EMT, Fender Tweed Deluxe, Fender Bassman, Fender Blackface, Twin Reverb, Marshall Super Lead, Mesa/Boogie, Hiwatt, Fender Tweed Champ, Soldano, Jensen Blue Backs, Celestion, Johnson Amplification and VHT Amplification are trademarks of other manufacturers and were used merely to identify products whose sounds were reviewed in the creation of this product.

Rock the Planet • Sandy UT USA • www.digitech.com

DigiTech
The Power to Create

A Harman International Company